

Project: Hathershaw College Reception Fit-Out

Client: Hathershaw College

Location: Oldham

Programme Range: 3 weeks

Sector: Reception, Education



Contact

sales@thehurstgroup.co.uk

thehurstgroup.co.uk

01274 711280





MAIN ENTRANCE: BEFORE



MAIN ENTRANCE: AFTER

Brief

Hathershaw College appointed Hurst to modernise and renovate its reception area, aiming to optimise the available space in the school's 70 year old building. After several unsuccessful bids for a new building, the college was eager to make the most of its existing infrastructure.

Building on the success of a previous collaboration with Hathershaw College, Hurst could be relied upon for their flexible approach to problem-solving, making them a trusted choice for managing this project.

Result

Hurst collaborated closely with the college from the initial consultation through to the installation of the reception area, delivering a modern and welcoming environment tailored to the client's specifications—on time and within budget.

The project featured zoned areas designed to maximise the functionality of previously underused spaces and also incorporated technology to provide real-time information to visitors and strengthen the college's brand presence.

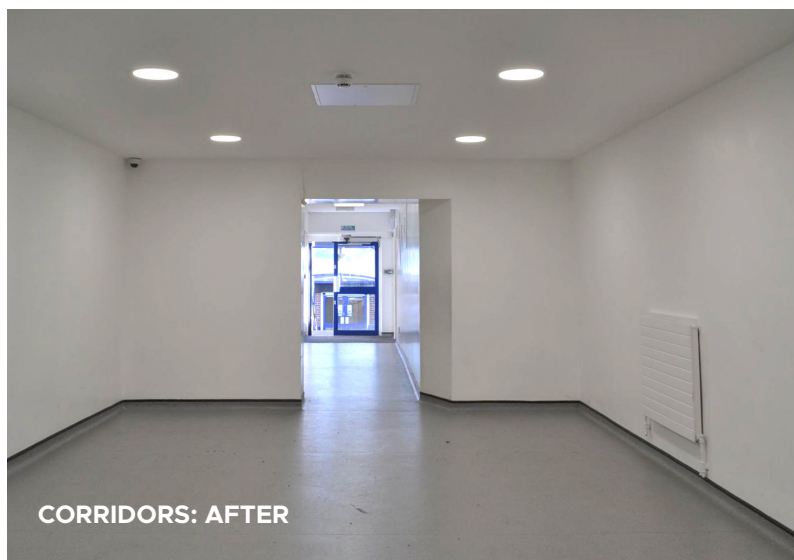
Upgrades to corridor spaces improved traffic flow during busy periods, having a positive effect on punctuality, safety, and overall student behaviour.

Scope of Works

- » Strip-out existing reception area
- » Opening up existing corridors
- » Installation of new ceilings and new flooring to reception and corridors
- » Upgraded lighting to reception and corridors
- » Mechanical and electric works to reception and corridors
- » Bespoke timber wall panelling
- » Installation of large display tv screen
- » Bespoke Corian reception desk with integrated colour-changing LED lighting
- » Relocating Main entrance doorway to a more central position
- » New exterior signage



CORRIDORS: BEFORE



CORRIDORS: AFTER

Challenges

Hurst faced the challenge of maintaining a functional reception area throughout the duration of the project. To minimise disruption, a temporary reception was established in an external portacabin, ensuring seamless operations.

Public safety was a priority during the works. The construction zone and waste skips were carefully segregated from school access points and securely hoarded off during the holidays, shielding staff and students from disruption upon their return.

During the initial stages, inconsistencies in the original ceiling design were uncovered. Addressing these issues promptly, Hurst adapted the plan without impacting the project timeline or budget.

Solution

As Principal Contractor, Hurst oversaw the project from the initial strip-out to the complete installation of the new reception area, which included upgraded flooring, ceilings, lighting, and mechanical and electrical works by our in-house teams. The redesign introduced new zoning, featuring bespoke timber wall panelling to create semi-private areas and a large TV screen was installed to share key information effectively. The centerpiece of the reception is a sleek, angled Corian desk; featuring integrated colour-changing LED lighting it creates an inviting focal point for visitors.

Additionally, several corridors were opened up to improve the flow of movement throughout the building. New, practical flooring, alongside improved lighting and décor, has transformed these areas, providing a safe, clean space for students and staff.





To view further case studies visit
thehurstgroup.co.uk/projects

Contact

Head office: 01274 711 280
sales@thehurstgroup.co.uk
thehurstgroup.co.uk

Aynsley House
Common Road
Low Moor, Bradford
West Yorkshire
BD12 0UF

